



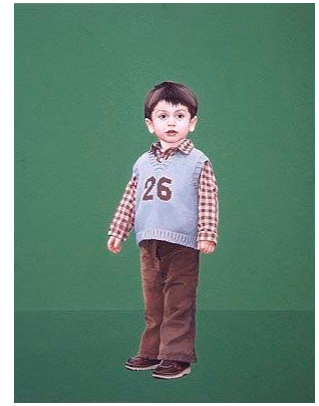
Anthony



Helen Tomkins



The Butterys



Hugo

Stephen Earl Rogers

Biography

Birth date 1971

Introduction Stephen Earl Rogers is a figurative painter whose work has been widely exhibited throughout the UK and is currently sold both through a London agent and internationally. He graduated from the University of Derby in 1995 with a degree in Fine Art and is currently based in Birmingham.

Education 1989-1991 Basingstoke College
1992-1995 University of Derby

Awards 1999 First Prize Winner Royal Leamington Spa Open
1998 Commended Derby Open
1997 Portrait prize winner Malvern Open
1996 Commended Mid Art
1995 Student prize winner Derby Open

Selected Commissions Portrait of the Buttery Family
Portrait of Mr. and Mrs. Latham
Portrait of Charlie De Lorenzo
Portrait of Isabelle De Lorenzo
Portrait of Helen Tomkins
Portrait of Philip Burke
Portrait of Anis and Alfie Newman
Portrait of Patrick Kite
Portrait of Karen and Lara De Silva
Portrait of the Orsler Children



Group Exhibitions

2001/02 BP Portrait Awards, National Gallery, London
Sotheby's Shrewsbury Open, Shrewsbury
Chelsea Art Fair, London
Adapt Now, Kelvingrove Museum and Art Gallery, Glasgow

2001 BP Portrait Awards, National Gallery, London
Finelot Gallery Summer Show, London
Affordable Art Fair West, Bath
Quantum Contemporary Art, Spring Show, London
Arteries Gallery, Glasgow
Quantum Contemporary Art, NSPCC/Cromwell Hospital, London

2000 RBSA 'Figures In My Landscape, Birmingham
Derby Open
Affordable Art Fair, Battersea Park, London
Mid Art 2000
The Custard Factory at the Assembly Rooms, Derby

1999 Leamington Spa Open (First prize winner), Royal Pump House
Derby Open
Affordable Art Fair, Battersea Park, London
Quantum Contemporary Art, The Harbour Club, Chelsea, London
David, Martinez, Rogers, The Big Peg, Birmingham
Mid Art 1999

1998 New English Art Club, The Mall Galleries, London
RBSA, Prize exhibition, Birmingham
Derby Open (commended)
Quantum Contemporary Art, Cork Street Christmas Show, London
The Birmingham Fringe Exhibition, The Bond Gallery, Birmingham
Mid Art 1998

1997 New English Art Club, The Mall Galleries, London
RBSA Open Oil & Sculpture, Birmingham
Derby Open
Malvern Open (Portrait prize winner)
Leicester Open
1996 RBSA Prize exhibition, Birmingham
Derby Open
Leicester Open

Mid Art 1996 (commended)
1995 Derby Open (student prize winner)
1993/4 Derby Open





Artist "As well as I can" (Borrowed from Van Eyck)
Statement

	Head and Shoulders	From £2500	\$3800
	Half Length	From £3500	\$5300
	3/4 Length	From £5000	\$7600
	Full Length	From £6000	\$9100
	Double Portrait	From £6000	\$9100
	Group Portrait	From £8000	\$12150

The Prices quoted are for the standard mediums of oil on canvas and bronze (in the case of sculpture).

For other mediums, prices may vary, please enquire directly with us for more specific quotes.

