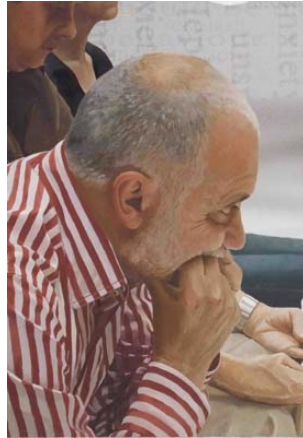




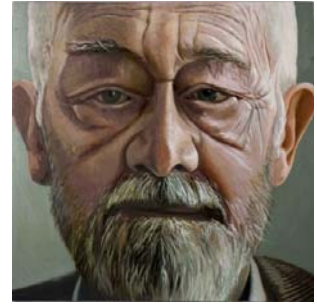
Ally Bacon



Dr Peter Gates



At the 'Curb' (Ben Rowley)



Alan Sillitoe

Edward Sellman

Biography

Birth date 14-01-1976

Introduction Edward was born in Stafford and now lives in the East Midlands, he studied art and education at Exeter University and recently completed the Slade School of Art Summer School. He lives and works in Nottingham but is able to undertake work throughout the UK.

Education 2009 - Slade School of Art (UCL) Summer School
2003 - PhD, University of Birmingham
1998 - First class degree, Art & Education, Exeter University

Selected Commissions 2009 - Allan Sillitoe
2009 - David Stewart OBE
2008 - Jack Johnson
2007 - Dr Gary Winship

Group Exhibitions 2009 - 'Identity' NHS Open 2009, City Gallery, Leicester
2009 - Summer Exhibition, Djanogly Art Gallery, Nottingham
2009 - Open Show, Surface Gallery, Nottingham
2009 - Staffs Open, Shire Hall Gallery, Stafford
2008/09 - Derby City Open, Derby Museum & Art Gallery
2007/08 - Derby City Open, Derby Museum & Art Gallery
2006 - Open, Potteries Museum & Art Gallery, Stoke-on-Trent
2005 - Staffs Open, Shire Hall Gallery, Stafford
2005 - Open, Potteries Museum & Art Gallery, Stoke-on-Trent



Solo Exhibitions

2009 - Nottingham Society of Artists Gallery, Nottingham

Artist Statement

Edward's oil paintings represent an interest in portraiture and are usually approached in a traditional layered style blended with the use of contemporary backgrounds and settings. A successful portrait captures something about the person that is difficult to capture in a photograph alone. This is why Edward pays particular attention to the gaze and expression of the sitter.

In his figurative work, Edward has been particularly interested in the relationship between human activity, the language and symbols used to mediate the world in which we live and the impact this has upon identity and the search for meaning. Hence, in recent work, Edward has incorporated text and language into the background of some of his portrait-based work.

Edward has exhibited his work widely in the Midlands region of England, being selected for numerous open exhibitions and had his first solo exhibition in 2009. This exhibition included one painting shortlisted for the Royal Academy Summer Exhibition 2009 and a portrait of Nottingham-born writer Alan Sillitoe, which will be put on permanent display at the Jubilee Campus of the University of Nottingham, built upon the former site of the Raleigh factory where Sillitoe once worked. Edward has also produced portraits for a number of academics as well as American singer Jack Johnson.

Statement

Edward understands the needs and demands of a sitter with a busy lifestyle and is completely flexible, he is able to complete a painted portrait from either photographic research or drawing or both. Edward is available during both the daytime and evening or at weekends to start the portrait. For illustrative purposes, Edward offers two options. Option 1 includes one initial sitting of 3 hours where drawings and photographs will be taken to work from and includes 6 further sittings as the painting progresses. Option 2 includes one initial visit of 1 hour to take photographs to complete the portrait from. A painting is typically completed within 3 months.

Edward is able to complete portraits throughout the UK. Travel costs outside the East Midlands will need to be added to the price quoted.

Edward can offer both advice about framing and a framing service. Prices can be discussed as part of the commissioning process.



Drawings From £ 400.00 \$ 800.00








Head and Shoulders From £ 900.00 \$ 1,800.00



Half Length From £ 1,000.00 \$ 2,000.00





	¾ Length	From £ 1,100.00	\$ 2,200.00
	Full Length	From £ 1,400.00	\$ 2,800.00
	Double Portrait	From £ 1,800.00	\$ 3,600.00
	Group Portrait	From £ 2,500.00	\$ 5,000.00
	Animals	From £ 800.00	\$ 1,600.00

The Prices quoted are for the standard mediums of oil on canvas and bronze (in the case of sculpture).

For other mediums, prices may vary, please enquire directly with us for more specific quotes.

